

Technical data sheet

Product features



Hood type dishwasher double skin 50x50 - 400 V

Model	SAP Code	00011271
NT 102	A group of articles - web	Undercounter, continuous and black ware dishwasher



- To the product for free: 1x RM Clean+ 12 kg (00012271) and 1x RM Rinse+ 10 kg (00012273)
- Display type: ProScreen - 4 digit display + 2 LED bars
- Number of programs: 7
- Number of skin: 2
- Door clear height [mm]: 465
- Rack size [mm]: 500 x 500
- Water consumption of the washing cycle [l/basket]: 2,7
- Washing cycle time [s/basket]: 60-90-180
- Detergent and rinse pump system: ProDose - accurate dosing with a peristaltic pump
- Wash pump type: two-way - DuoFlow
- Self-cleaning cycle: Yes
- Drain filter: ArchiMedes - double filtration with overflow discharge ensures only 18% loss of clean water to waste

SAP Code	00011271	Boiler power [kW]	7.000
Net Width [mm]	633	Basin volume [l]	22
Net Depth [mm]	755	Tank power [kW]	2.500
Net Height [mm]	1562	Water consumption of the washing cycle [l/basket]	2,7
Net Weight [kg]	110.00	Washing cycle time [s/basket]	60-90-180
Power electric [kW]	10.200	Door clear height [mm]	465
Loading	400 V / 3N - 50 Hz	Rack size [mm]	500 x 500
Boiler capacity [l]	6.00	Noise of device	58,6

Technical drawing



Model

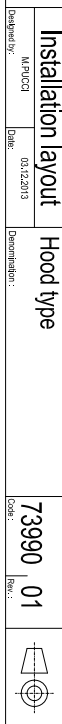
SAP Code

00011271

NT 102

A group of articles - web

Undercounter, continuous and black ware dishwasher



Technical data sheet

Product benefits



Hood type dishwasher double skin 50x50 - 400 V

Model	SAP Code	00011271
NT 102	A group of articles - web	Undercounter, continuous and black ware dishwasher

1

Stainless steel outer shell construction

round construction with stainless steel, rounded edges, Deep-drawn bathtub

2

Washing arms made of composite, common for washing and rinsing

upper and lower composite swivel arms common for washing and rinsing with clickclack system for easy removal

3

LED Display

proScreen 4 local display + 2 LED strips

4

Two-way pump

unique two-way DuoFlow pump

5

Molded basket supports

guide rails for the baskets molded from the body of the dishwasher

6

Detergent dispensers

two detergent and rinse aid dispensers

7

Double filter system

the chamber filter and the waste filter together with the ArchiMedes system provide a discharge system with increased water purification efficiency

8

Fast heating

Performance management allows the current running of the boiler and basins body

9

Protection of fragile dishes

softstart system for gradual start of washing programs to protect fragile dishes

10

Double shell construction

stainless steel construction with insulated double jacket

11

Energy saving

energy saving energy saving system due to lowering the temperature of the boiler

12

Fast heating

performance management allows the current running of the boiler and basins body

Technical data sheet

Technical parameters



Hood type dishwasher double skin 50x50 - 400 V

Model	SAP Code	00011271
NT 102	A group of articles - web	Undercounter, continuous and black ware dishwasher

1. SAP Code:

00011271

2. Net Width [mm]:

633

3. Net Depth [mm]:

755

4. Net Height [mm]:

1562

5. Net Weight [kg]:

110.00

6. Gross Width [mm]:

870

7. Gross depth [mm]:

760

8. Gross Height [mm]:

1540

9. Gross Weight [kg]:

120.00

10. Device type:

Electric unit

11. Control type:

Digital

12. Material:

Stainless steel

13. Power electric [kW]:

10.200

14. Loading:

400 V / 3N - 50 Hz

15. Number of programs:

7

16. Opening of device:

Flip up

17. Door clear height [mm]:

465

18. Adjustable feet:

Yes

19. Number of skin:

2

20. Self-cleaning cycle:

Yes

21. Boiler capacity [l]:

6.00

22. Boiler power [kW]:

7.000

23. Basin volume [l]:

22

24. Tank power [kW]:

2.500

25. Number of arms for both rinsing and washing:

2

26. Arm connection:

Click-clack - easy removal with one hand

27. Washing arm type:

Rotatable two-pronged

28. Washing arm material:

Composite

Technical data sheet

Technical parameters



Hood type dishwasher double skin 50x50 - 400 V

Model	SAP Code	00011271
NT 102	A group of articles - web	Undercounter, continuous and black ware dishwasher

29. Rinsing arm type:

Rotating two-pronged

30. Rinsing arm material:

Composite

31. Deep drawn tank:

Yes

32. Rack support:

Pressed

33. Tank surface strainers:

composite

34. Drain filter:

ArchiMedes - double filtration with overflow discharge ensures only 18% loss of clean water to waste

35. Thermostop:

Yes

36. Boiler thermostat adjust:

Yes

37. Rack feed capacity:

60-40-20

38. Detergent and rinse pump system:

ProDose - accurate dosing with a peristaltic pump

39. Energy Saving system:

EnergySaving - Energy saving system due to lowering the boiler temperature

40. Rinse system:

ProRinse - composite arms common for rinsing and washing with geometry for spraying water in thin jets directly against the dishes, the rinsing pump ensures constant pressure

41. Heating system:

HotWash - System of simultaneous operation of the heating element of the bath and the boiler, reducing the time for starting the next cycle

42. Lift system:

ProGlide - Required lifting force equals 3 kg thanks to counterweights and gentle guidance, reduces operator fatigue

43. Hot water electric valve:

Yes

44. Closing door system:

ProSoft - Reduces noise, dampens the door stop, which could cause damage to dishes

45. Rack size [mm]:

500 x 500

46. Display type:

ProScreen - 4 digit display + 2 LED bars

47. Location of control panel:

On the top

48. USB port:

Yes, for Firmware actualisation

49. Self-diagnostics:

Yes

50. Wash pump type:

two-way - DuoFlow

Technical data sheet

Technical parameters



Hood type dishwasher double skin 50x50 - 400 V

Model	SAP Code	00011271
NT 102	A group of articles - web	Undercounter, continuous and black ware dishwasher

51. Detergent dispenser:

Yes

52. Rinse aid dispenser:

Yes

53. Water consumption of the washing cycle [l/basket]:

2,7

54. Washing cycle time [s/basket]:

60-90-180

55. Rinse water temperature [°C]:

80

56. Standard equipment for device:

1x glass basket, 1x plate basket, 1x cutlery basket

57. Program ProSpeed:

Yes

58. Program ProFessional:

Yes

59. Program ProTemp:

Yes

60. Program ProSelf:

Yes

61. Program ProEco:

Yes

62. Program ProLong:

Yes

63. Program ProGlass:

Yes

64. Noise of device:

58,6

65. Cross-section of conductors CU [mm²]:

2,5

66. Water supply connection:

3/4"

67. Diameter nominal:

DN 50